

VIOLENT CRIME PROFILE

Winnebago County

Introduction

Problem analysis is the basic building block for creating an effective, strategic approach to crime prevention. Many criminal justice agencies collect a vast amount of data, yet few use these data in ways that can fully inform their policies and practices. Understanding your community's crime problem will require analysis of various types of information, some of which may be already collected and some of which will require additional data collection efforts. The purpose of this document is to provide your community with a starting point for assessing, understanding, and discussing its violent crime problems, particularly those stemming from firearm-related violence. The packet contains analyses of data that are accessible to researchers working at the state-level and include data submitted to the Illinois State Police Uniform Crime Reporting and Criminal History Record Information (CHRI) programs.

At the end of this pack is a glossary of terms to aid interpretation and understanding of the data points presented. The packet also provides suggestions for what other types of data should be collected and examined. Research staff at the Illinois Criminal Justice Information Authority are available to talk more with you about the data presented here as well as what additional data that might exist and next steps for data collection and analysis.

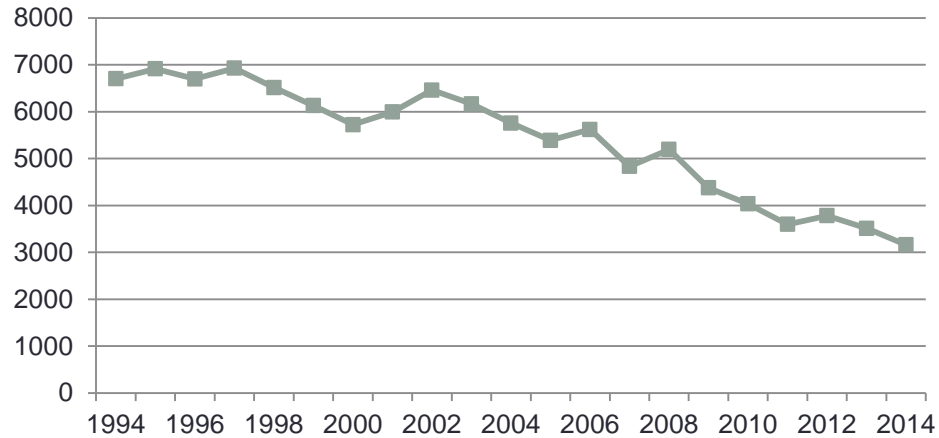
- John Maki, Executive Director



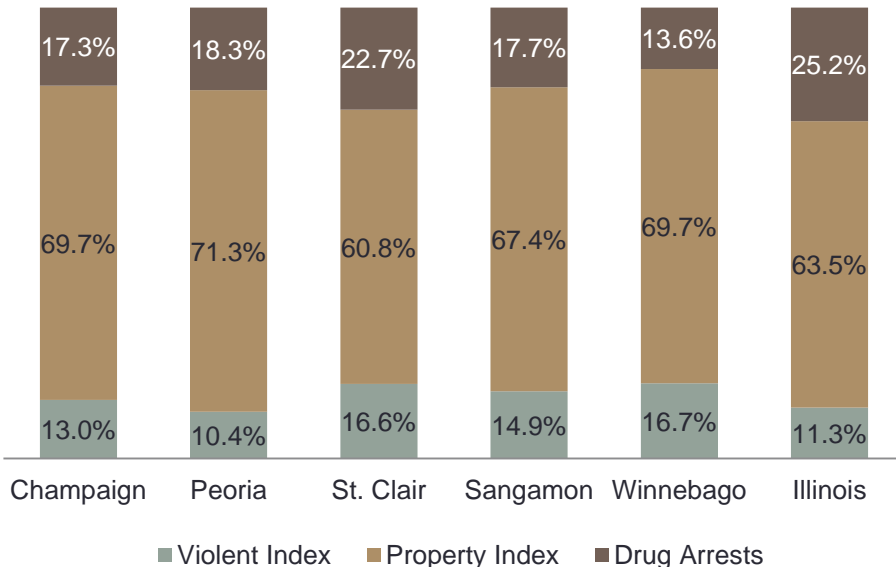
Index Crime and Drug Arrests - 2014

- Since 1994 to 2014, the property index crime rate has decreased in Winnebago County.
- Due to changes in data collection and reporting practices, particularly for the City of Rockford, analyzing the violent index crime rate trend is more challenging. When just examining the most recent years 2010 to 2014, however, it is worth noting that rate has decreased and the rate of decline in the violent index crime rate was greater than that noted for the property index crime rate during the same time period.
- Like other communities with comparable residential populations, property index crimes accounted for the largest percentage of crimes in Winnebago County as reported to the State Police Uniform Crime Reporting program.

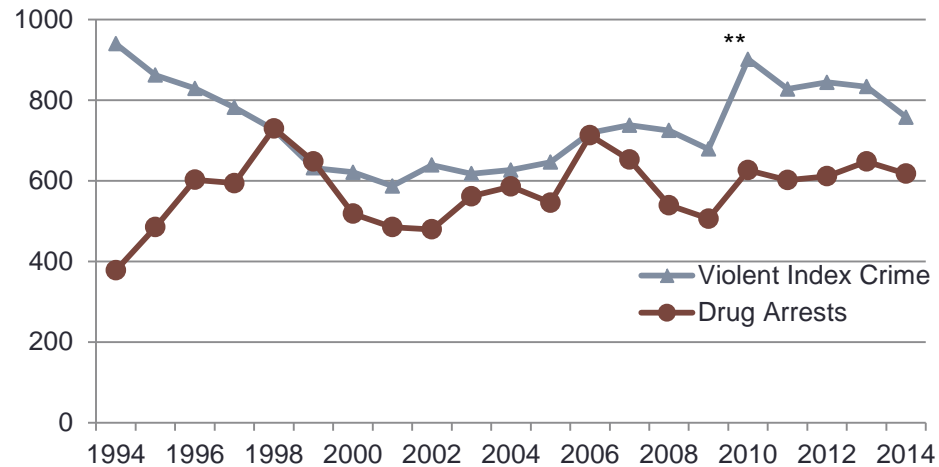
Property Index Crime Rate per 100,000 Persons



Index Crime and Drug Arrests - 2014



Violent Index Crime and Drug Arrest Rates per 100,000 Persons

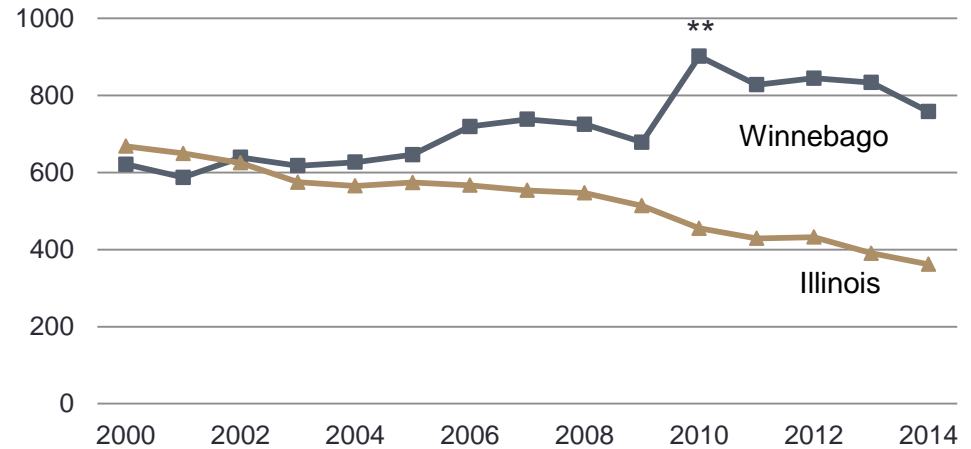


**Rockford switched to NIBRS in 2007 and ISP revised reporting for crimes against persons, including aggravated assault, in which one offense is counted for each victim.

Violent Index Crime - 2014

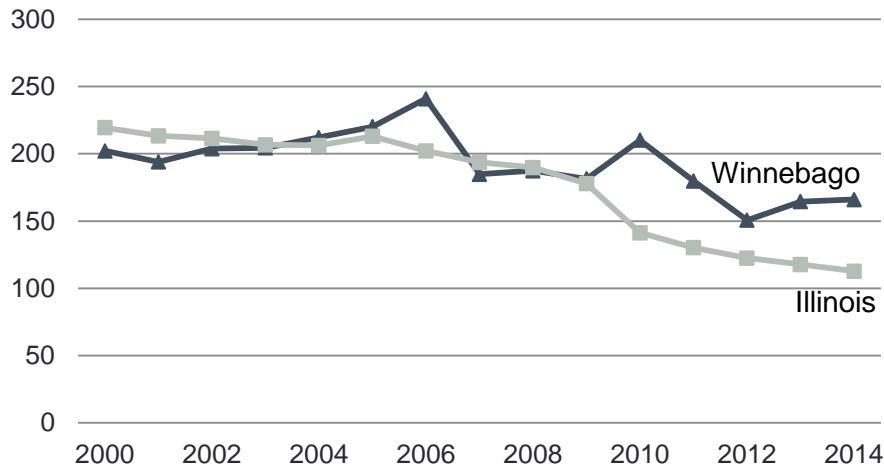
- Again, due to reporting changes, comparison between the violent index crime trend for Winnebago County and the state rate challenging.
- Aggravated assaults (and batteries) accounted for the largest percentage of violent index crimes in Winnebago County from 2010 to 2014. Robberies accounted for the next highest percentage of crimes reported and arrests; murders accounted for the smallest percent of crimes reported and arrests.

Violent Index Crime Rate per 100,000 Persons



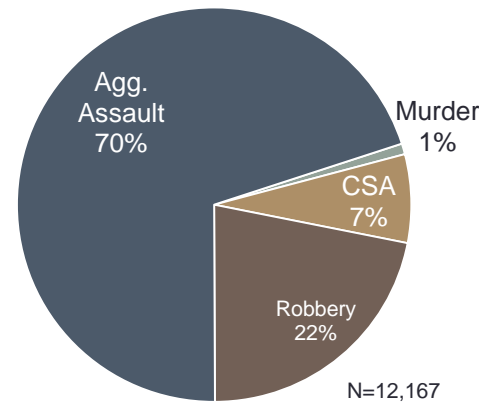
**Rockford switched to NIBRS and ISP revised reporting for agg. assault/battery.

Violent Index Arrest Rate per 100,000 Persons

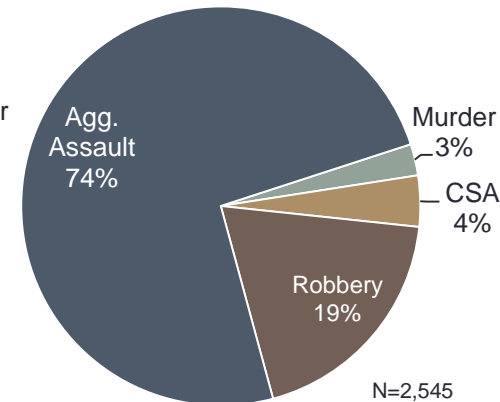


Winnebago County: 2010 - 2014

Violent Index Crimes



Violent Index Arrests

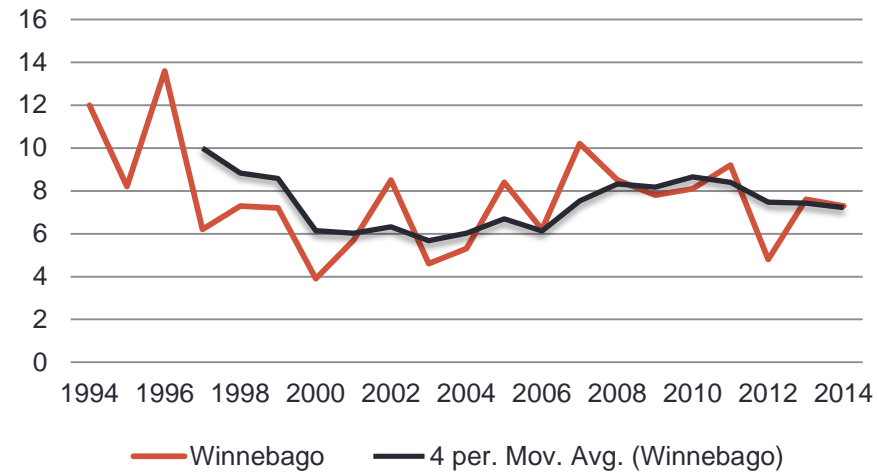


Source: Illinois State Police IUCR Annual Reports.

Murder & Aggravated Assault – 1994 - 2014

- The murder rate in Winnebago County has fluctuated throughout the time period examined, with periods of decline, incline, and relatively little change. Most recently the rate has hovered around 7 murders per 100,000 persons.
- As noted, changes in data collection and reporting practices makes analyzing the aggravated assault (and battery) rate trend more challenging. It appears there is an recent trend decline, although more data are needed to understand if this is indeed an actual decrease.

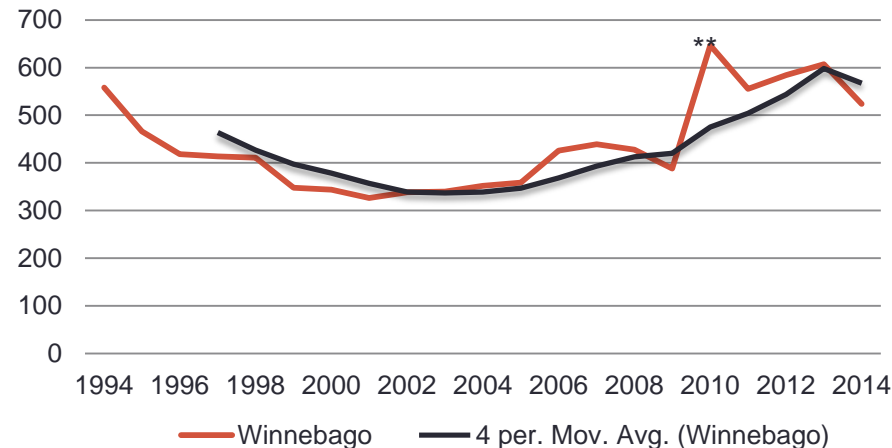
Murder Rate per 100,000 Persons, 1994 - 2014



Number of Murders and Aggravated Assaults, 2005-2014

Offense Type	2005	2006	2007	2008	2009	2010	2011	2012	2013	2014
Murders	24	18	30	25	23	24	27	14	22	21
Aggravated Assaults	1,025	1,231	1,291	1,265	1,147	1,909	1,631	1,706	1,766	1,512

Aggravated Assault Rate per 100,000 Persons, 1994 - 2014

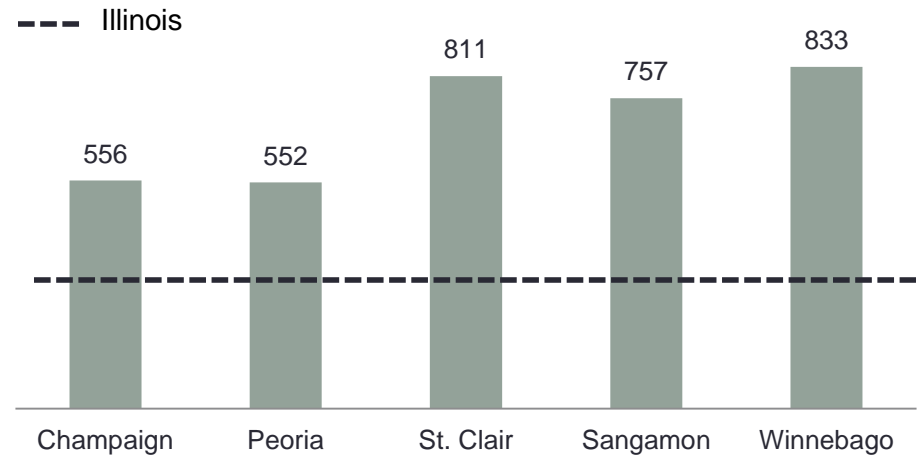


**Rockford switched to NIBRS and ISP revised reporting for agg. assault/battery.

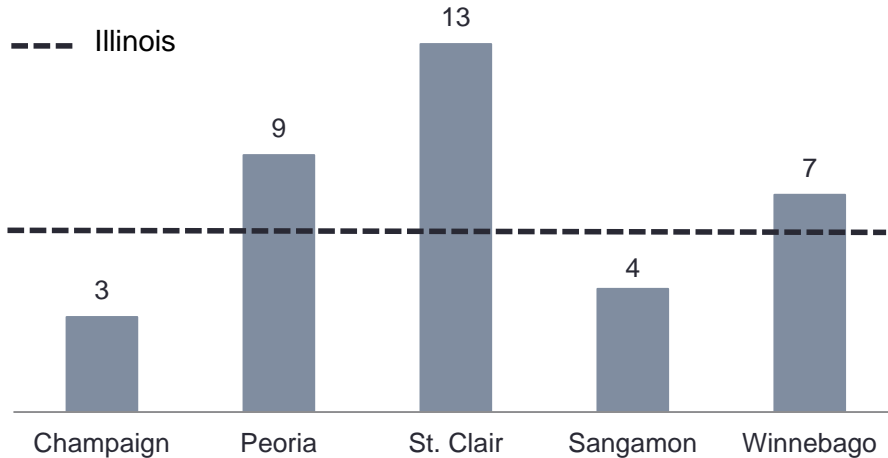
Avg. Violent Crime Rates – 2010 to 2014

- The average violent crime, murder, and aggravated assault (and battery) rates are higher for Winnebago County than the statewide rates.
- Direct comparisons between counties of comparable population sizes is somewhat challenging and caution should be taken when drawing conclusions. Community-level factors, such as the rate of poverty, unemployment, and residential mobility, are associated with crime prevalence and may explain the differences noted.
- Additional cautions should be taken due to changes in data collection and reporting particular to Winnebago County.

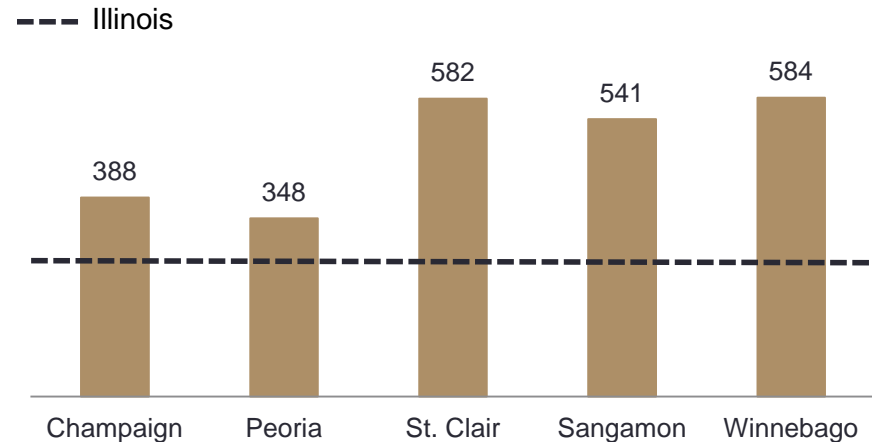
Average Violent Index Crime Rate per 100,000 Persons



Average Murder Rate per 100,000 Persons



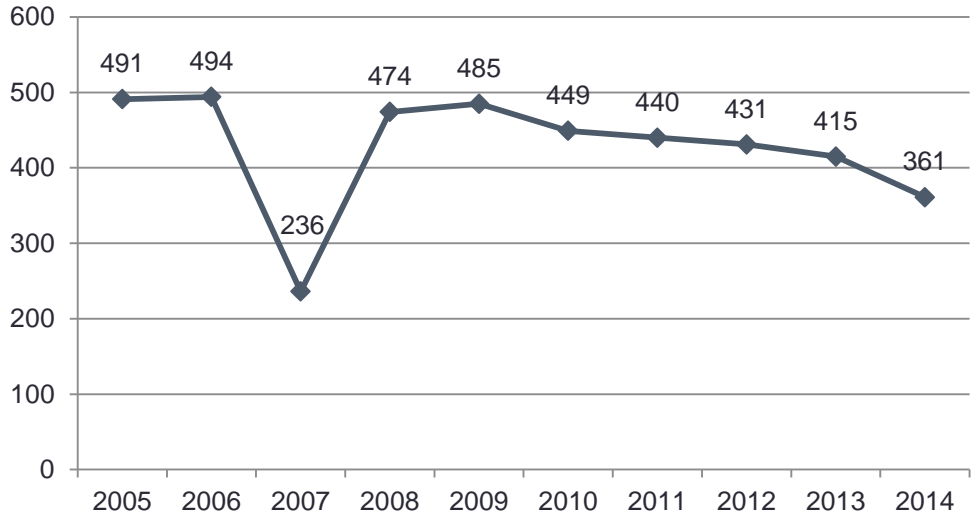
Average Aggravated Assault Rate per 100,000 Persons



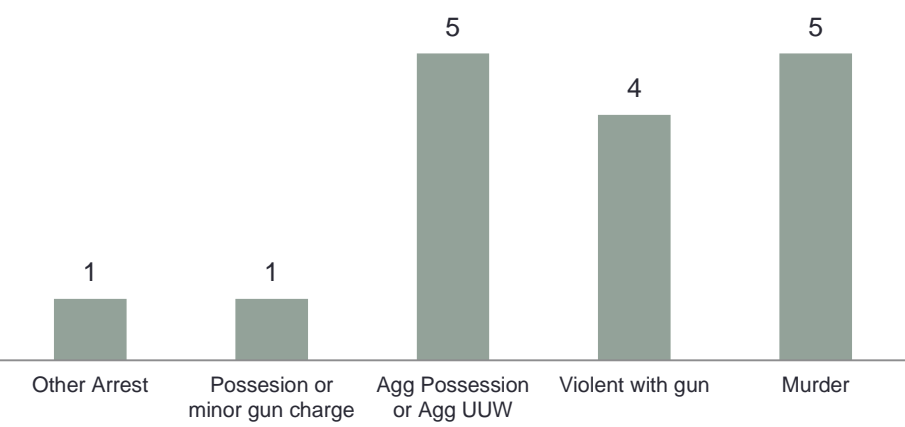
Murders & Firearm Involved Arrests – 2014

- There were 361 murder and firearm-involve arrests made by agencies located in Winnebago County in 2014. The typical arrestee in 2014 was 24 years old (median age), male, Black (57%), and had 4 prior arrests (median prior arrests).
- Those arrested for more serious, violent offenses tended to have more significant criminal histories, both in terms of the number of prior arrests, but also the type of prior arrests.
- Conviction rates varied by type of arrest charge, with more serious arrest charges more likely to result in convictions.

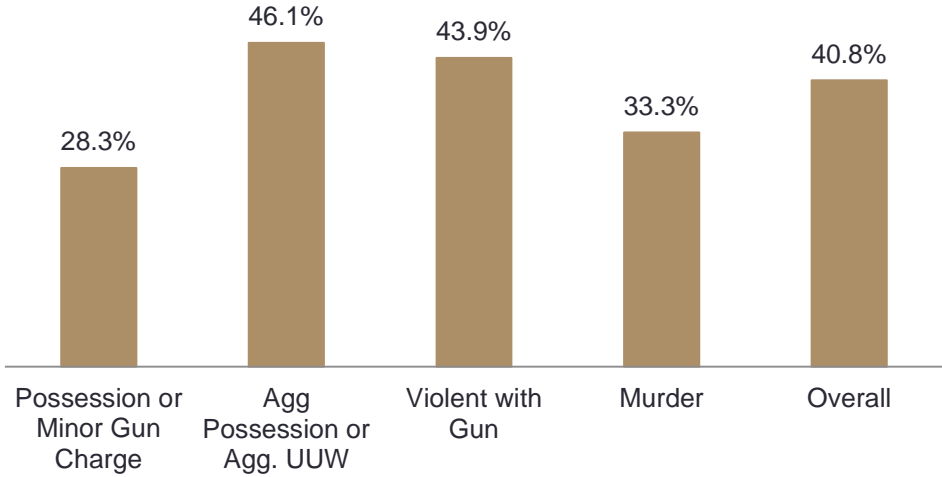
Total Number of Murder and Firearm-involved Arrests



Median Number of Prior Arrests by Current Arrest Charge*



Percent of Arrests in 2010 Resulting in a Conviction by 2014



*Includes all arrests from 2005 to 2014.

Source: Illinois Criminal History Record Information system.

Suggested Additional Data Analysis

Communities interested in implementing the programs identified during this conference are encouraged to consider analyzing and potentially collecting additional data. Regardless as to whether communities are considering focused deterrence or the swift, certain, and fair approach, we strongly urge that you collect information that helps facilitate a discussion about the relationship between the residents of your community and criminal justice agencies.

- **Police data (Focused Deterrence):**
 - Calls for service by crime type, date/time, neighborhood
 - Crime data by victim and suspect characteristics (NIBRS data)
 - Shootings by date/time, suspect(s) and victim(s) involved, group(s) involved, neighborhood, motive, weapon(s) used
 - Individual and group-specific data for targeted intervention
- **Probation data (Swift, Certain, Fair):**
 - Probation trends in use and compliance
 - Profile of probationers who violate terms of probation, including demographics, violation types and reasons for violations, offense history, previous history on probation
 - Assessment of existing probation processes and sanctioning practices
- **Neighborhood perceptions and legitimacy:**
 - Neighborhood conditions, crime, fear of crime
 - Police and the criminal justice system response
 - Police-community relationship (legitimacy, support)
- **Police and other CJS personnel perceptions:**
 - Police-community relationship
 - Collaborative relationship between criminal justice stakeholders (police, prosecutors, probation, parole, community service providers)
 - Barriers to effective crime prevention and intervention

Glossary of Terms

- Violent Index crimes:** Includes all incidents of murder, criminal sexual assault, robbery, and aggravated assault/battery reported to the police.
- Property Index crimes:** Includes all incidents of burglary, theft, motor vehicle theft, and arson reported to the police.
- Drug arrest violations:** Includes all arrests made for violations of the Illinois Cannabis Control Act, Controlled Substances Act, Hypodermic Syringes and Needles Act, Drug Paraphernalia Control Act, and the Methamphetamine Control Act.
- Moving average:** A moving average is simply the average of a specific number of data points across the time period examined. In the data provided to you we calculated a 4-year moving average. The first moving average would represent years 1994 to 1997, the second moving average would be for years 1995 to 1998 and so forth. A moving average allows one to “smooth” out trend lines, which can aid in interpretation of overall trends.
- Firearm-involve arrests:** Includes any crime in which the fingerprint arrest card indicated a firearm flag or the offense for which the individual was charged involved a firearm.
- Median:** The middle point of a range of sorted values. The median is sometimes preferred over an average score when the range includes extreme numbers because those extreme numbers pull the average score higher or lower.